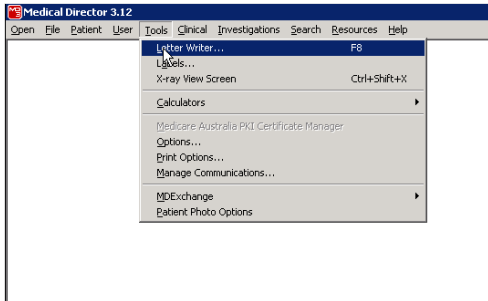
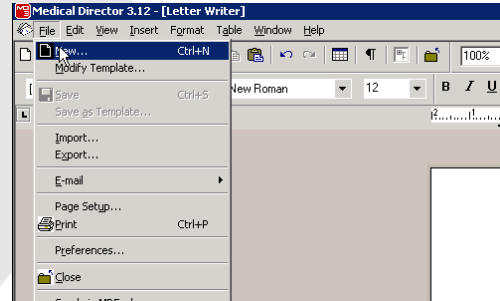


Instructions for adding referral forms to Medical Director 3.12

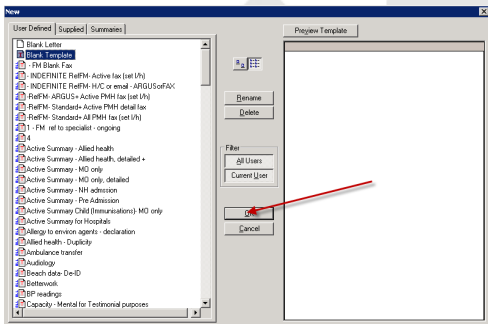
These are instructions for adding referral forms to Medical Director, for any other Practice Software that you may use please contact Cybersquad on 1300 300 497. This guide also assumes that you have saved the forms from our site to a appropriate location on your system.



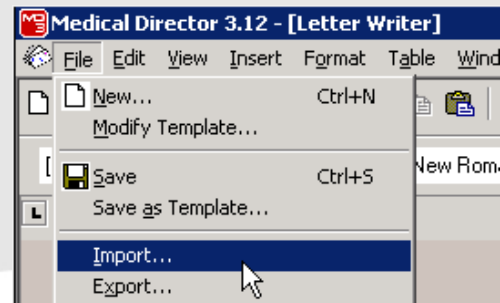
1. Load Medical Director and start letter writer.



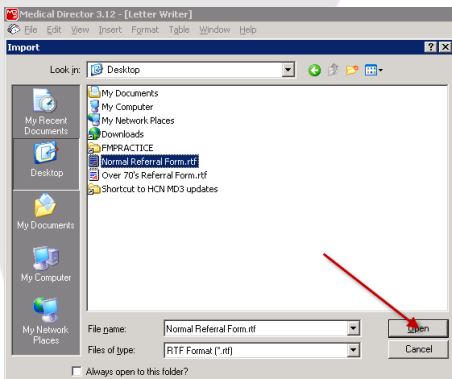
2. From the file menu select New.



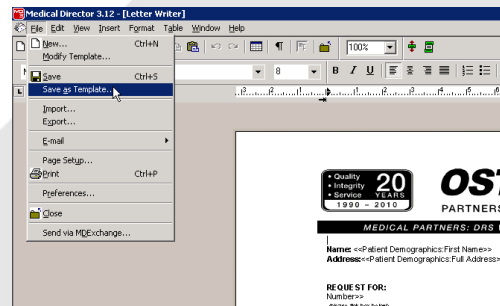
3. Select Blank Template and click ok.



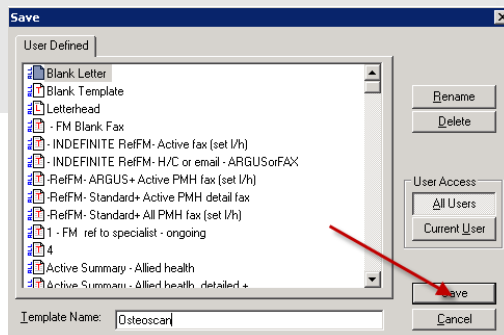
4. From the file menu select Import.



5. Navigate to the location to which you saved the forms and select, then click ok.



6. From the file menu select Save as Template.



7. Give the Template a relevant name and click save. You can now use your referral for you have installed.